

Categories

- Corvette Headlight Gears
- Corvette & GM tach filters
- Firebird Head lights & Misc.
- GM Headlight Rebuild (Other)
- Ford Window Rebuilding
- Chrysler Light Motor Repair
- Chrysler Electric Window Repair
- Lotus Headlights
- Buick Reatta
- Ferrari
- Kubota Lawn Mowers
- Dyson Hand Held Vac's
- Isuzu Trooper 3.4 Swap
- Kit car acc's
- Zero Lash Sway Bar Links
- Fiero Apparel
- Fiero Stickers
- Fiero Audio
- Brakes
- Electrical
- Fiero Headlight Gears
- Light Bulbs
- Fiero Engine
- Fiero Cables
- Fiero Exhaust
- Fiero 3.4 Engine Swap
- Fiero Interior
- Fiero Exterior
- Fiero Shifters
- Shifter boots, Rebuild Kits etc
- Steering & Suspension->
- Fiero Tools
- Fiero Manuals
- Clutch Masters Slave Cylinders
- Fiero Transaxles
- Seconds, Sale Items, etc..
- Used Fiero parts
- Miscellaneous

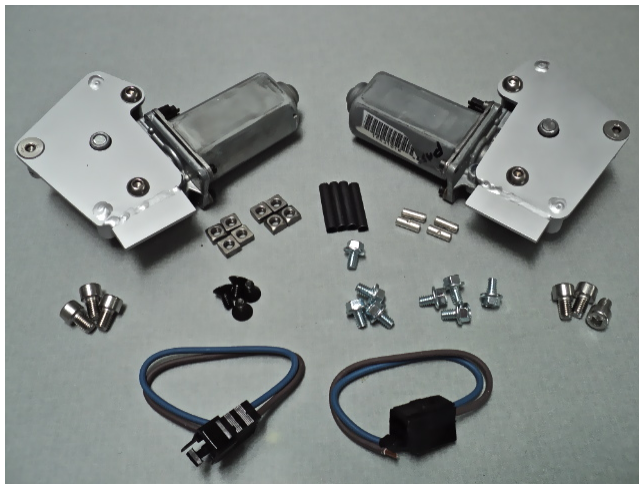
Faster Electric Window Motors

Upgrade to really fast electric window motors!

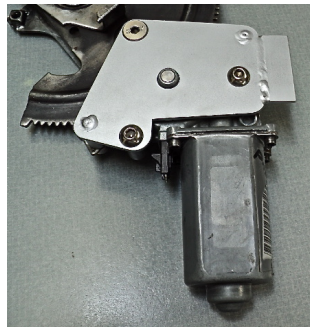
This was originally an idea of Fierobessed on the Fiero Forum. Fierobessed found these electric window motors and mounted these new motors on a steel plate and then mounted them on the Fiero window scissors lift assembly. The problem Fierobessed had was clearance between these larger electric window motors and the channels the glass rides on. I looked at this for a length of time and devised a way to mount them lower providing more clearance by mounting the plates on top of the motors. Paul Smith worked with me to work out the kinks and he has installed them in one of his Fiero's and it worked out well. Although the clearance is minimal it was around 1/4".

My kits will (as long as they are available) will use high quality USA made OEM GM electric window motors. Those low cost aftermarket (China made) replacement electric window motors have proven hold up as well as the USA made OEM GM electric window motors. These USA made OEM GM window motors also cost a lot more. The electric motors I am using are the same motors GM installed in many GM cars and trucks. Most of these high quality USA made electric window motors lasted the life of these GM cars and trucks. I have seen low cost aftermarket China made electric window motors fail in a very short period of time. My kits will only come with these high quality USA made OEM electric window motors made by the same USA manufacturer that supplied them to GM. Once installed you will have much faster electric windows and and electric window motors that should never have to be replaced.

This is the kit, it is very complete



The trick to making this modification work is I mount the electric motor to a laser cut steel plate that is mounted on top of the motor. This motor/plate assembly then gets mounted to the steel window scissors lift assembly. I also do some modifications to the electric motors so they sit lower. This is as low as you can go.



New motor mounted to a scissors assembly

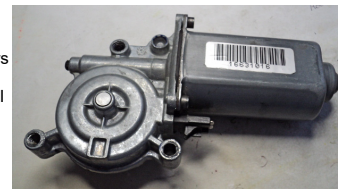


Underside view. Kit includes the Allen head fasteners

\$229.95



Click to enlarge



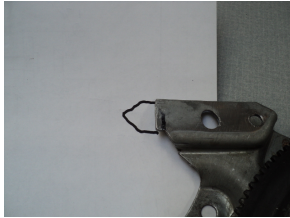
What's New? →



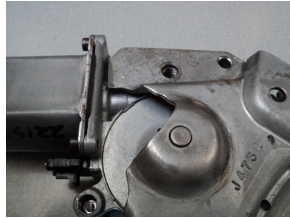
Deluxe Wheel Center Overlays \$21.95

Information

Shipping & Returns



A small area needs to be cut off the scissors assembly. Drill out the two remaining motor mounting holes to 3/8" or 10 mm. With the two mounting holes drilled out and the ear cut off mount the motor to the scissors assembly with two 8 mm Allen bolts included in the kit.



Showing the motor and how it fits with the small area of steel removed from the scissors lift bracket. To locate the third hole bolt the motor to the scissors bracket and mark the location of the third hole. Take the motor off and drill the third mounting hole.

When you bolt the motors on to the scissors assembly for the final time rotate the large gear so it is at about at the 3/4 window up position. At the 3/4 window up position allows you to install the assembly back in the door with no clearance problems.

The wiring harnesses need to be extended to reach the new motors. Included in the kit are 2 new pigtails with 6" leads on them. You cut off the ends from your existing door wiring harness then use the supplied butt splices plus adhesive lined shrink tube to make the wires longer and also waterproof. The wires are opposite. The blue connects to the brown and the brown connects to the blue.

How do I attach the window motor scissors assembly back into the door? The preferred method is to weld in four 1/4 x 20 square nuts as shown in the picture above. I include eight unplated 1/4 x 20 square nuts if you choose to do it this way. Also included are four 1/4 x 20 flat head screws. You use the flat head screws to hold the nuts in place before welding. This trick insures the square nut is perfectly centered over the hole on the steel scissors plate. **Note:** If you happen to have a HD rivet gun you can use large aluminum rivets again.



Included are eight new 1/4 x 20 serrated flange bolts to mount the scissors assembly back into the doors.

Optional mounting kit:

To make this as easier kit to install and not require welding I also offer an upgrade kit that includes eight 1/4 x 20 U nuts and a step drill. But remember: You are trying to keep the motor at a minimum height, using these clip nuts raises the scissors assembly around 1 mm. That should generally not be a problem.



U nuts, longer Allen head bolts and step drill.

The holes in the scissors lifts have to be drill larger (10 mm) to accept the U nuts.

Hole on the right has been drilled larger to accept the U nut.

Special installation note when using the U nuts: Because the clearance between the large gear and the steel scissors plate is minimal I include four 1/4 x 1/2" long Allen head bolts to help the installation when using the U nuts. When installing the scissors assembly back in to the door use the four longer Allen head screws to get it mounted and in place. Once all four Allen head bolts are tightened remove one Allen head bolt at a time and install the shorter serrated flange bolts. Do not leave the four longer Allen head bolts in. They may hit the large gear.

Additional installation tips:



Clamp the assembly securely in a heavy duty work bench vice as shown. Install a U-clamp to keep the spring in place on the scissors assembly. Grab the spring with a large vice grips and rotate it around and over the tab. This is the passenger side assembly.

Not much more work than installing new aftermarket stock replacement electric motors in your Fiero. The scissors assembly has to be removed and these new motors installed on the scissors assembly.

I am not offering this as a DIY kit. I do several machining/milling modifications to these electric window motors to make them work in my kits. I also will not offer these with the low cost/low quality China made electric window motors available everywhere. No one should go thru all this work to install these to only have the low cost China made motors fail after a short time. Do it once and do it right.

Install this yourself or if you do not have the skills needed have a professional install this kit.

Shipping:

Shipping is \$12.95 (Midwest USA)

Final shipping cost is determined by weight of the item(s) and distance from Milwaukee, WI. Shipping prices quoted are for items shipped to the Midwest area in the USA. If you are ordering a single item or multiple items the total shipping price is determined after you place the order. I try to keep my shipping prices to a minimum and use Postal Flat Rate boxes whenever I can utilize them for an order.

Available Options:

Item:

This product was updated on Saturday 27 August, 2016.

 [Reviews](#)

 [Add to Cart](#)

Sunday 25 December, 2016

2700025 requests since Sunday 17 May, 2009

Copyright © 2016 Rodney Dickman's Automotive Accessories
Designed and Maintained by SoftNuTek